



CONVEYORS INC

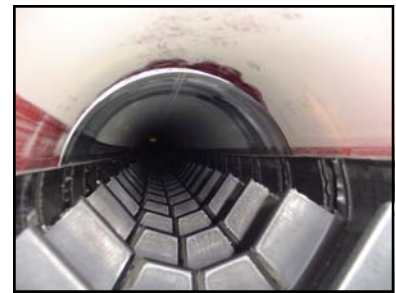
454 N. State Route 49  
P.O. Box 69  
Cissna Park, IL 60924

888-KSICONV (574-2668)

sales@ksiconveyors.com  
www.ksiconveyors.com

## Model 1610 Load Out Truck Conveyor

Patent No. 6,170,646 & 6,675,958



KSi Cleated Belt in the Tube

### Features:

- Electric, PTO, or hydraulic drive available
- 10" galvanized tube construction
- Complete enclosed return
- 16" patented cleated belt with 2" cleat on 6" center
- Patented drive configuration
- Cable lift or scissors hydraulic lift
- 19' through 72' lengths available
- 6000 pounds per minute/will vary slightly with density change

The goal of KSi Conveyors is to design a conveyor that will outperform conventional augers and conveyors in the speed of material flow, the maximum degree of operation, and material handling. The KSi Seed Conveyor achieves this due to its cleated belt. As a result of the cleats the seed conveyor can move seed more efficiently than conventional conveyors with ability to perform at a 40 degree angle. The cleated belt conveyor handles material gently resulting in very little material damage. With these results the KSi Seed Conveyor proves to be more efficient than conventional augers and conveyors.



Collapsible Hopper



Patented Cleated Belt