



CONVEYORS INC

Quality product moving quality product

**Model 120819 Cleated Belt Truck Conveyor
Parts Manual**

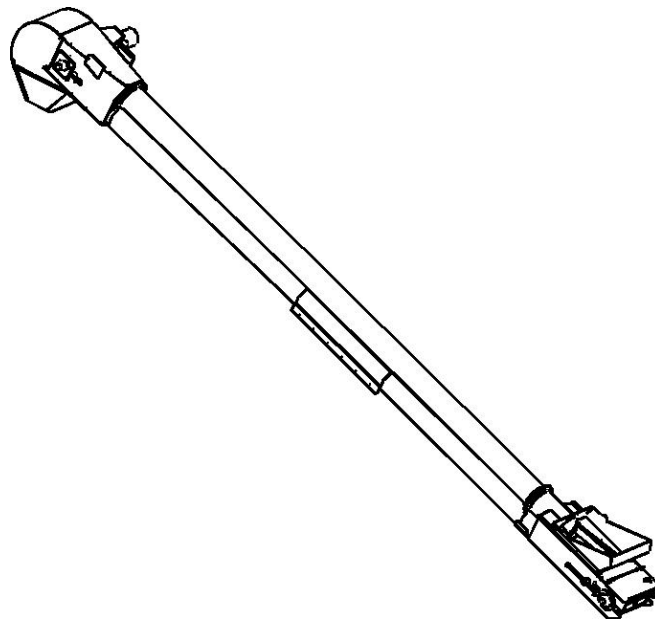


Table of Contents

HOW TO ORDER PARTS	3
CONVEYOR ASSEMBLY	4
LOWER END GROUP	6
UPPER END GROUP	8

How to Order Parts

1. Refer to the proper layout view for the area of the machine.
2. Find illustration of the part to be ordered.
3. Note the ITEM number in the balloon point to the part.
4. On the parts list, find the ITEM number listed in the table.
5. Find the Quantity, Part Number, and Description associated with the ITEM number for use when placing your order.

Paint

For matching red paint, use Diamond Vogel IB5588, or equivalent paint.

Order supplies from

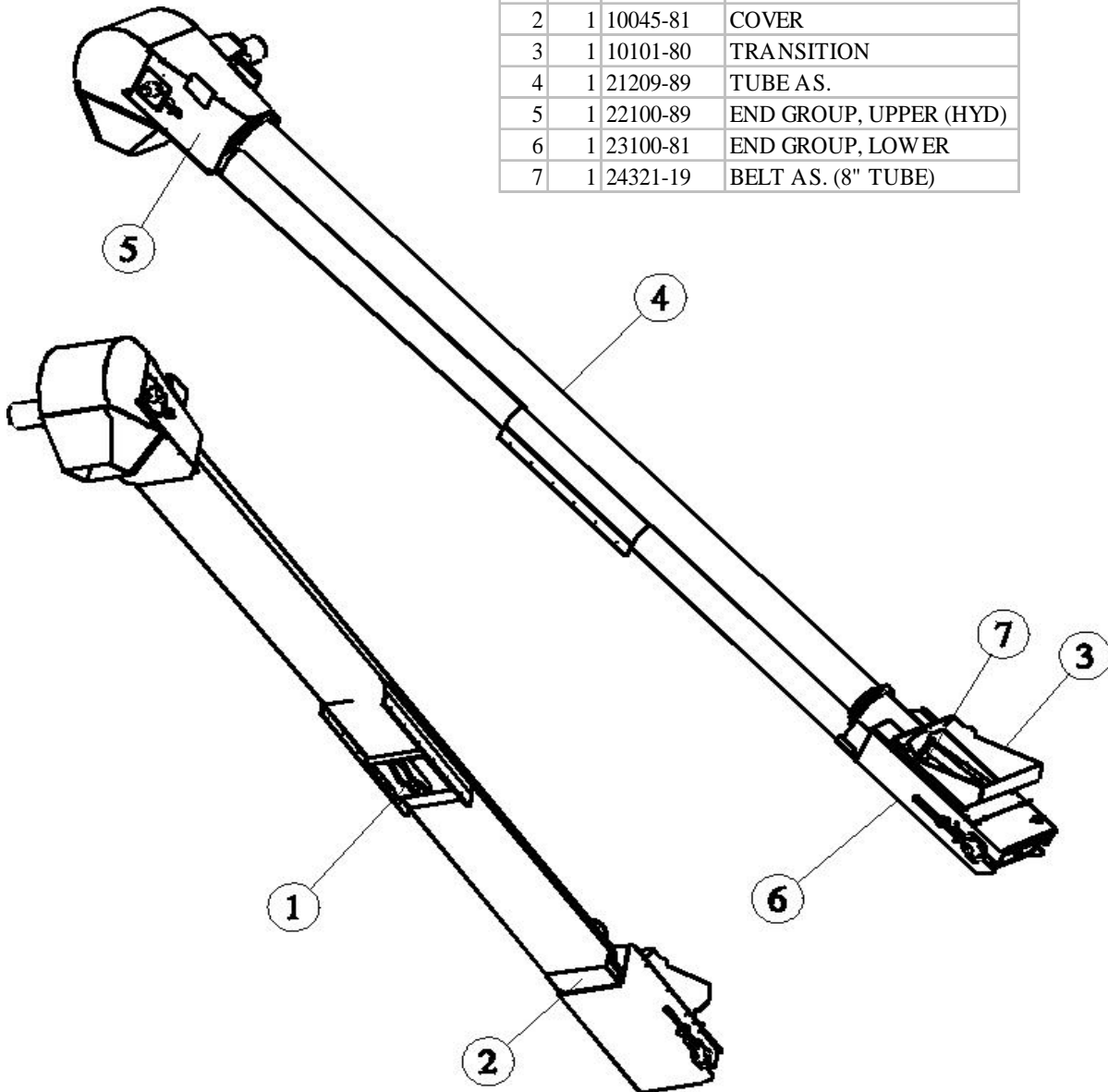
KSi Conveyors
PO Box 69
Cissna Park, IL 60924
Phone: 815-457-2403

Abbreviations used in Parts List

As.—Assembly
Bkt.—Bracket
No.— Number
itm.—Item
Qty.—Quantity
RH—Right hand side
LH—Left hand side

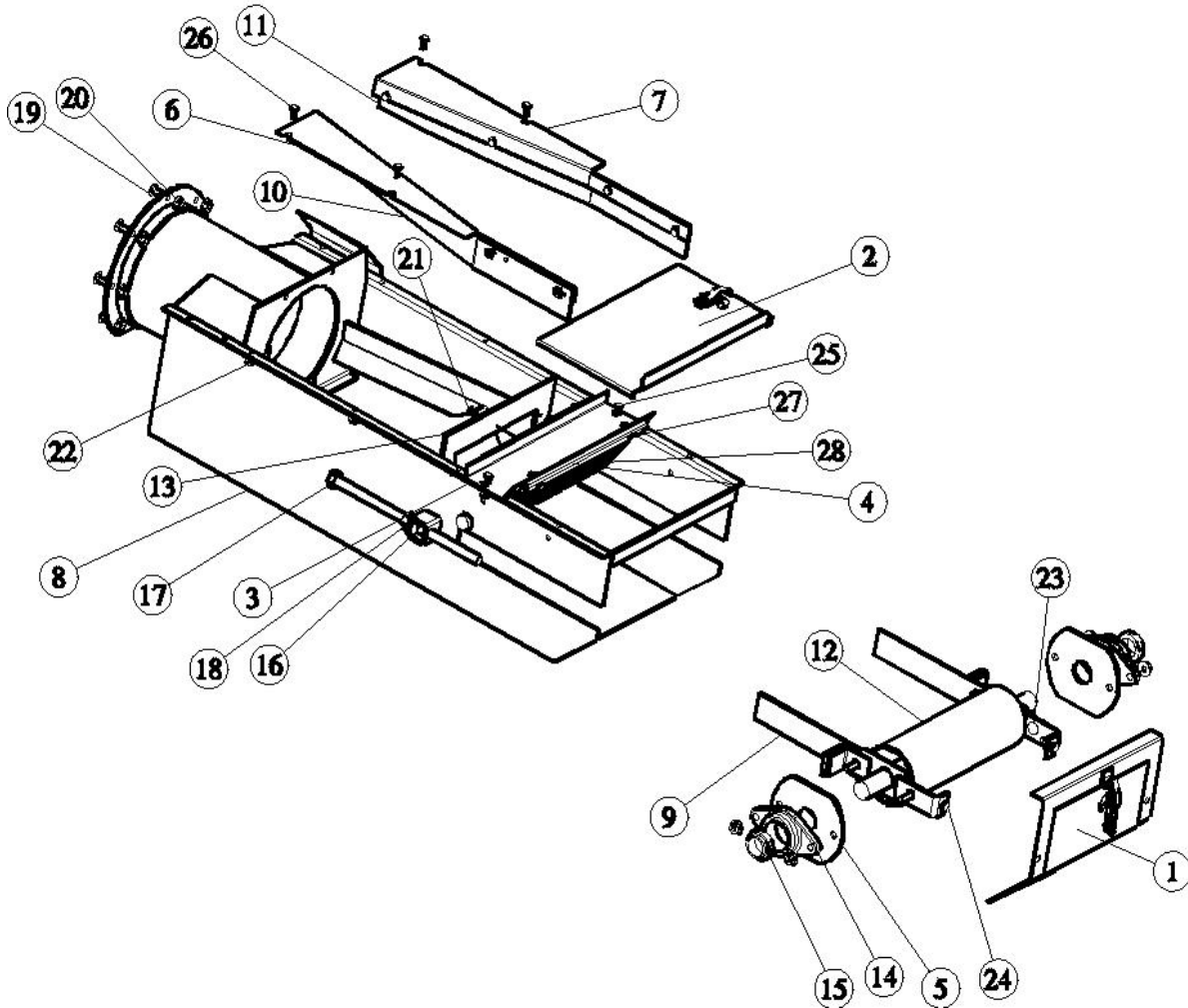
CONVEYOR ASSEMBLY

ITM	QTY	PART NO.	NAME
1	1	10021-80	CARRIAGE AS.
2	1	10045-81	COVER
3	1	10101-80	TRANSITION
4	1	21209-89	TUBE AS.
5	1	22100-89	END GROUP, UPPER (HYD)
6	1	23100-81	END GROUP, LOWER
7	1	24321-19	BELT AS. (8" TUBE)



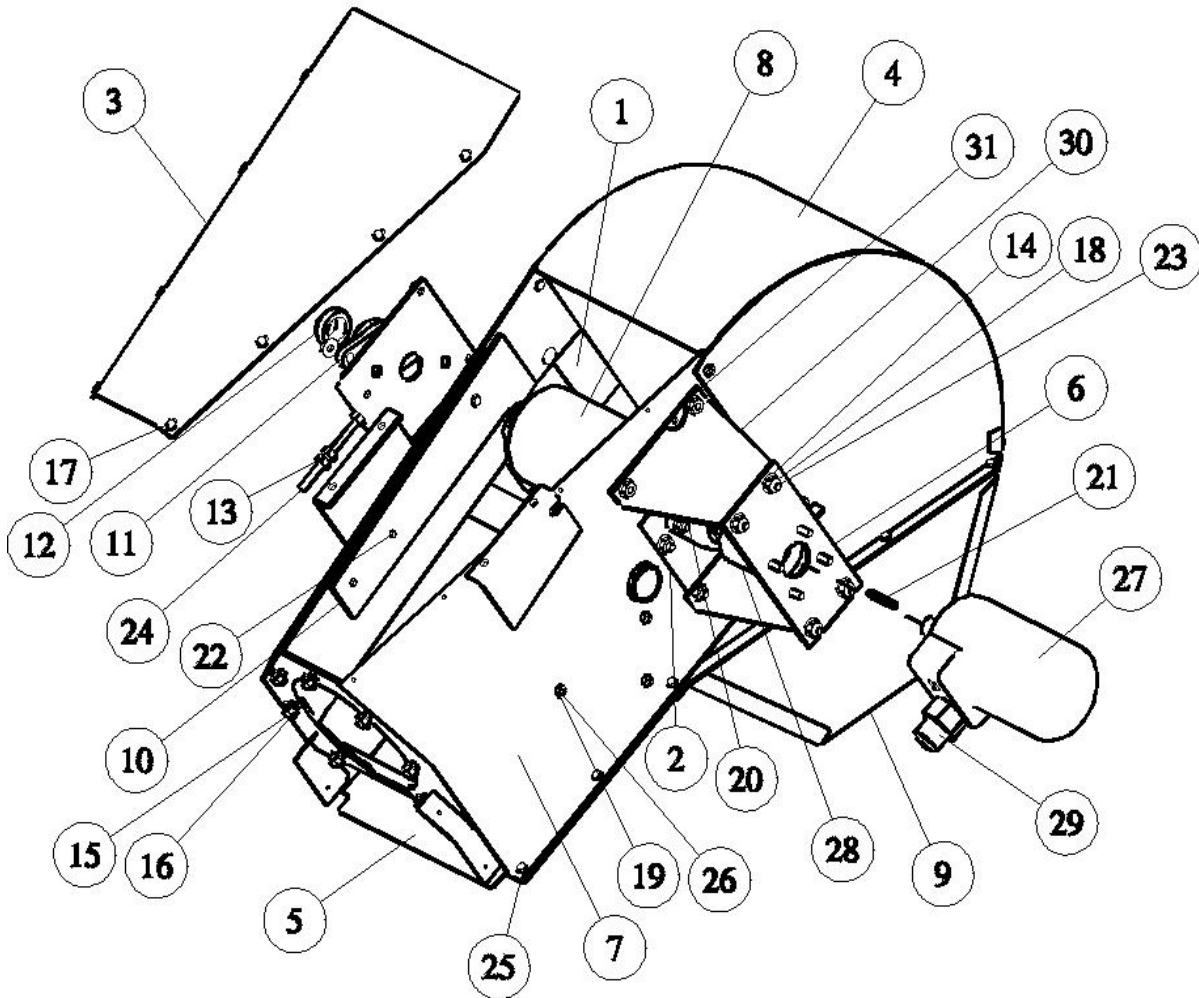
Part numbers shown are for the all stainless steel conveyor. Carbon steel options are available by simply changing the suffix of the part number.

23100-81 LOWER END GROUP



ITM	QTY	PART NO.	NAME
1	1	20031-80	DOOR AS., LOWER
2	1	20037-80	COVER AS.- DRUM
3	1	20038-04	FLOWGUARD AS.
4	1	20038-05	BRUSH HOLDER
5	2	20048-81	PLATE, BEARING
6	1	20059-81	BRACKET, FLAP
7	1	20059-82	BRACKET, FLAP
8	1	23101-80	BASE AS.
9	2	23104-01	BKT AS, LOWER BEARING
10	1	23110-01	FLAP
11	1	23110-02	FLAP
12	1	23120-00	DRUM AS., LOWER
13	1	23122-01	FLAP
14	2	24112-01	BEARING FLANGE (J-DAY T-62G)
15	2	24113-01	BEARING & LOCK COLLAR
16	2	24114-01	NUT, SQUARE (5/8)
17	2	24115-01	SCREW, TENSIONING (5/8")
18	2	24139-01	NUT (5/8)
19	7	24144-01	BOLT, CARRIAGE (3/8 X 1)
20	11	24145-01	NUT, FLANGED (3/8)
21	3	24146-01	BOLT, SELF TAPPER (1/4 X 0.5)
22	18	24150-01	NUT, FLANGED (1/4)
23	4	24154-01	BOLT, CARRIAGE (3/8 X 1.25)
24	2	24201-01	BOLT, HEX (3/8 X 1)
25	2	24210-01	BOLT, HEX (1/4 X .50)
26	12	24211-01	BOLT, FLANGED (1/4 X .75)
27	2	24212-01	BOLT, HEX (1/4 X 1.0)
28	1	24348-01	BRUSH (12")

22100-83
UPPER END GROUP



ITM	QTY	PART NO.	NAME
1	1	20012-80	PLATE AS, BEARING (LH)
2	1	20013-80	PLATE AS, BEARING (RH)
3	1	20014-81	COVER, TOP
4	1	20015-81	HOOD AS.
5	1	20034-81	COVER, LOWER
6	1	20074-01	MOTOR MOUNT (HYD)
7	1	22101-80	TOP END AS.
8	1	22107-00	DRUM AS. (CHAN 110-CSXV) 5"
9	1	22109-81	SPOUT AS.
10	2	22110-01	FLAP (LH)
11	2	24112-01	BEARING FLANGE (J-DAY T-62G)
12	2	24113-01	BEARING & LOCK COLLAR
13	3	24133-01	NUT (3/8)
14	4	24134-01	FLATWASHER (3/8)
15	17	24144-01	BOLT, CARRIAGE (3/8 X 1)
16	21	24145-01	NUT, FLANGED (3/8)
17	8	24146-01	BOLT, SELF TAPPER (1/4 X 0.5)
18	4	24149-01	LOCKNUT (3/8)
19	24	24150-01	NUT, FLANGED (1/4)
20	4	24154-01	BOLT, CARRIAGE (3/8 X 1.25)
21	1	24177-01	KEY (1 1/4 SHAFT)
22	4	24178-01	SCREW, SELF TAPPER #10 x 1
23	8	24201-01	BOLT, HEX (3/8 X 1)
24	1	24208-01	TAP BOLT (3/8 X 5)
25	19	24210-01	BOLT, HEX (1/4 X .50)
26	5	24211-01	BOLT, FLANGED (1/4 X .75)
27	1	24349-01	HYD MOTOR, 9.8 CU IN, 379 RPM
28	1	24350-01	COUPLER
29	1	24351-01	CHECK VALVE
30	2	60750-03	PLATE, MOTOR
31	1	65110-01	PLATE, SHIM

Specifications

1. Capacity

A. The capacities of conveyors varies greatly under varying conditions. The following factors play a role in the performance of the conveyor:

- Speed of belt
- Angle of operation
- Moisture content of commodity
- Percentage of foreign matter
- Methods of feeding
- Type of commodity

B. Under normal conditions, capacity is 2500 bu/hr.

2. Length

19 ft from roller axis to roller axis, 21 ft overall.

3. Drive Unit

A. Hydraulic motor, 7.6 cu in displacement, 12gpm @ 2000 psi

4. Belt

Width: 12 in.

Surface: 2" Cleats on 6" spacing

Material: Rubber

5. Speed

Standard belt speed is 376 FPM (feet per minute).