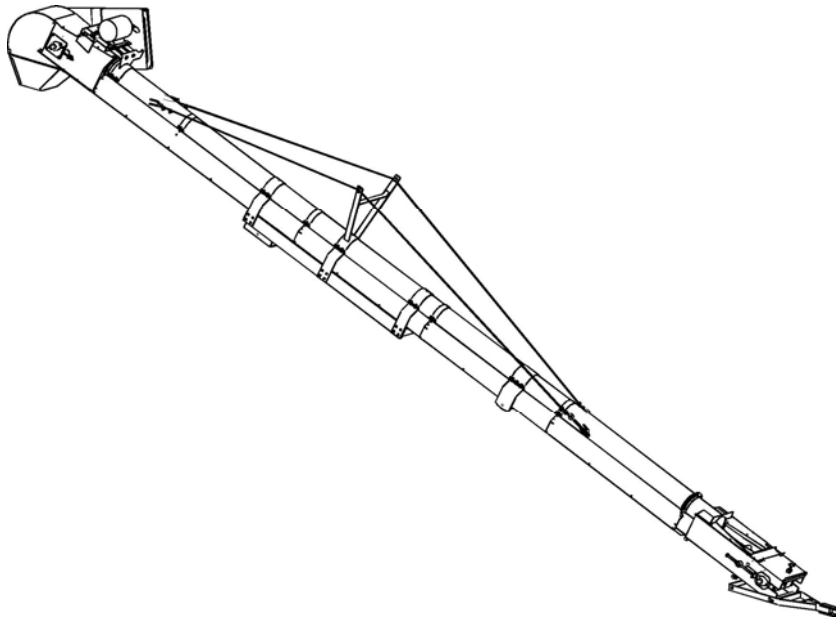




**CONVEYORS INC**

*Quality product moving quality product*

**Model 120827 Cleated Belt Seed Conveyor  
Parts Manual**



## Table of Contents

HOW TO ORDER PARTS .....	3
CONVEYOR ASSEMBLY .....	4
LOWER END GROUP .....	6
UPPER END GROUP .....	8

## How to Order Parts

1. Refer to the proper layout view for the area of the machine.
2. Find illustration of the part to be ordered.
3. Note the ITEM number in the balloon point to the part.
4. On the parts list, find the ITEM number listed in the table.
5. Find the Quantity, Part Number, and Description associated with the ITEM number for use when placing your order.

### Paint

For matching red paint, use Diamond Vogel IB5588, or equivalent paint.

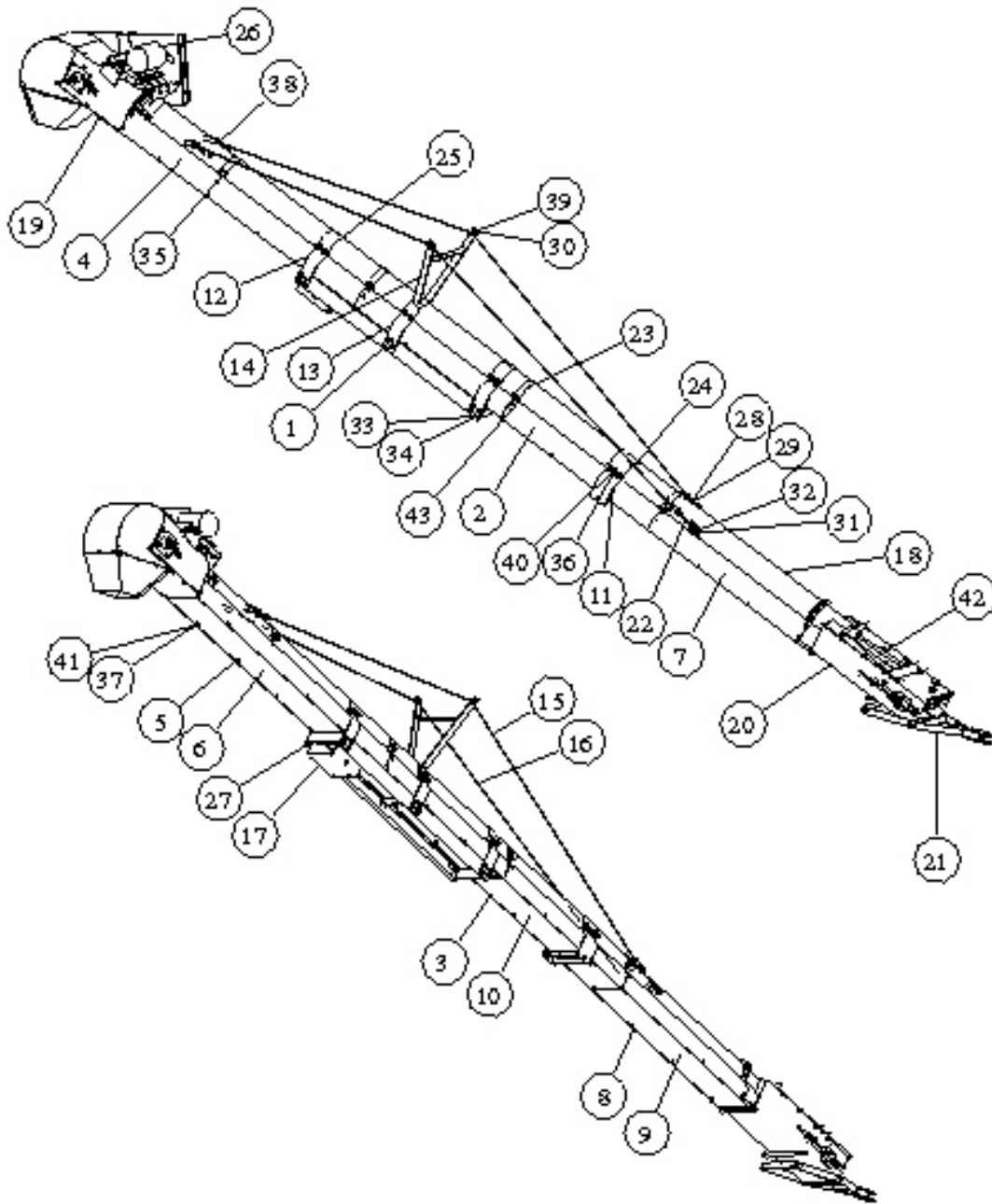
### Order supplies from

**KSi Conveyors**  
PO Box 69  
Cissna Park, IL 60924  
Phone: 815-457-2403

### Abbreviations used in Parts List

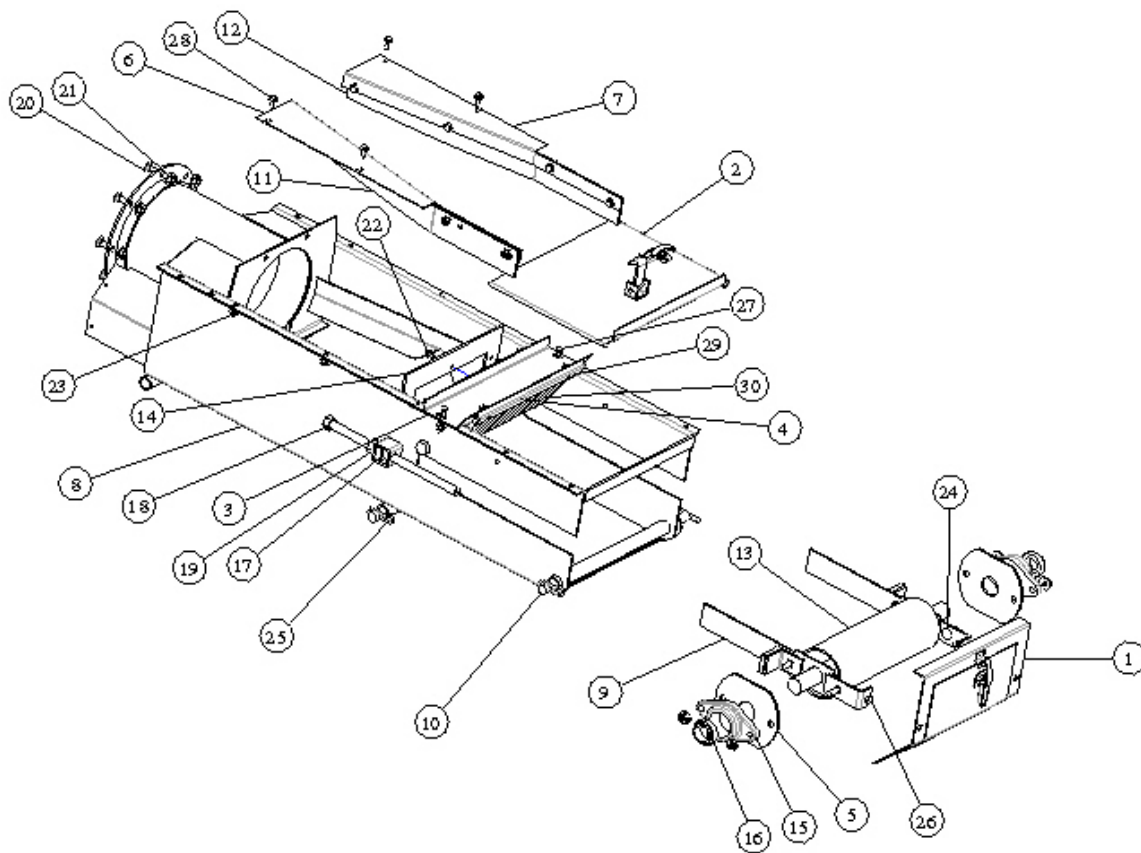
As.—Assembly  
Bkt.—Bracket  
No.— Number  
itm.—Item  
Qty.—Quantity  
RH—Right hand side  
LH—Left hand side

### CONVEYOR ASSEMBLY



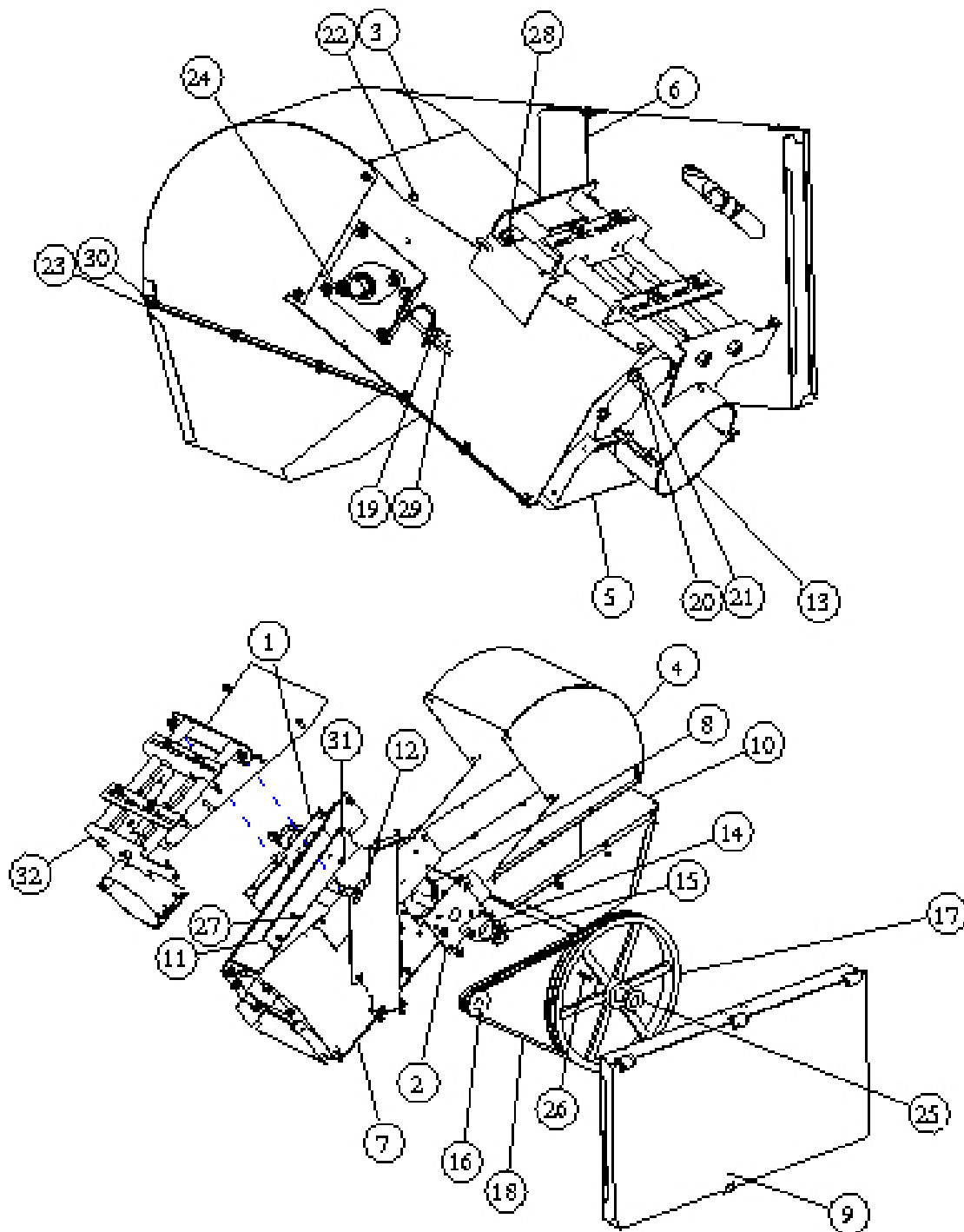
ITM	QTY	PART NO.	NAME
1	2	20022-01	TRACK
2	2	20040-01	SHIELD, MID (LH)
3	2	20040-02	SHIELD, MID (RH)
4	1	20042-01	SHIELD, TOP (LH)
5	1	20042-02	SHIELD, TOP (RH)
6	1	20043-01	PAN (TOP)
7	1	20044-01	SHIELD, LOWER (LH)
8	1	20044-02	SHIELD, LOWER (RH)
9	1	20045-01	PAN (LOWER)
10	2	20046-01	PAN (MID)
11	1	21108-27	CRADLE AS.
12	2	21110-01	CRADLE AS. (TRACK ENDS)
13	1	21111-00	CRADLE AS. (MID TRACK)
14	1	21112-00	TRUSS AS.
15	1	21115-03	CABLE, TRUSS (1/4")
16	1	21115-04	CABLE, TRUSS (1/4")
17	1	21122-01	CARRIAGE AS.
18	1	21209-27	TUBE AS.
19	1	22100-01	END GROUP, UPPER
20	1	23100-01	END GROUP, LOWER
21	1	23103-00	HITCH AS.
22	2	24001-01	EYEBOLT (1/2)
23	4	24107-01	BAND CLAMP, 2 IN (DMC-GK1055)
24	1	24108-01	BAND CLAMP, 6 IN (DMC-GK1326)
25	2	24109-01	BAND CLAMP, 4 IN (DMC-GC05397)
26	1	24120-01	MOTOR, 5 HP 1PH
27	4	24124-01	PULLEY
28	8	24125-01	CLAMP, CABLE (1/4)
29	16	24127-01	NUT (1/4)
30	4	24133-01	NUT (3/8)
31	4	24136-01	NUT (1/2)
32	2	24137-01	FLATWASHER (1/2)
33	24	24144-01	BOLT, CARRIAGE (3/8 X 1)
34	24	24145-01	NUT, FLANGED (3/8)
35	28	24146-01	BOLT, SELF TAPPER (1/4 X 0.5)
36	30	24149-01	LOCKNUT (3/8)
37	29	24150-01	NUT, FLANGED (1/4)
38	2	24173-01	THIMBLE (1/4)
39	2	24174-01	CLAMP, CABLE (3/8)
40	30	24203-01	BOLT, HEX (3/8 X 1.5)
41	29	24210-01	BOLT, HEX (1/4 X .50)
42	1	24321-27	BELT AS. (8" TUBE)
43	4	25102-00	BRACKET AS. - SHIELD

### 23100-01 LOWER END GROUP



ITM	QTY	PART NO.	NAME
1	1	20031-00	DOOR AS., LOWER
2	1	20037-00	COVER AS.- DRUM
3	1	20038-04	FLOWGUARD AS.
4	1	20038-05	BRUSH HOLDER
5	2	20048-01	PLATE, BEARING
6	1	20059-01	BRACKET, FLAP
7	1	20059-02	BRACKET, FLAP
8	1	23101-00	BASE AS.
9	2	23104-01	SLIDE AS.
10	2	23109-01	PIN - HITCH RELEASE
11	1	23110-01	FLAP
12	1	23110-02	FLAP
13	1	23120-00	DRUM AS., LOWER
14	1	23122-01	FLAP
15	2	24112-01	BEARING HOLDER
16	2	24113-01	BEARING & LOCK COLLAR
17	2	24114-01	NUT, SQUARE (5/8)
18	2	24115-01	SCREW, TENSIONING
19	2	24139-01	NUT (5/8)
20	7	24144-01	BOLT, CARRIAGE (3/8 X 1)
21	11	24145-01	NUT, FLANGED (3/8)
22	3	24146-01	BOLT, SELF TAPPER (1/4 X 0.5)
23	18	24150-01	NUT, FLANGED (1/4)
24	4	24154-01	BOLT, CARRIAGE (3/8 X 1.25)
25	2	24179-01	COTTER-HAIR PIN
26	2	24201-01	BOLT, HEX (3/8 X 1)
27	2	24210-01	BOLT, HEX (1/4 X .50)
28	12	24211-01	BOLT, FLANGED (1/4 X .75)
29	2	24212-01	BOLT, HEX (1/4 X 1.0)
30	1	24348-01	BRUSH

22100-01  
UPPER END GROUP



ITM	QTY	PART NO.	NAME
1	1	20012-00	PLATE AS, BEARING (LH)
2	1	20013-00	PLATE AS, BEARING (RH)
3	1	20014-01	COVER, TOP
4	1	20015-01	HOOD AS.
5	1	20034-01	COVER, LOWER
6	1	20051-01	BRACKET, BELTGUARD
7	1	22101-00	TOP END AS.
8	1	22107-00	DRUM AS., TOP (CHAN 110-CSXV)
9	1	22108-01	BELTGUARD AS.
10	1	22109-01	SPOUT AS.
11	1	22110-01	FLAP (LH)
12	1	22110-02	FLAP (RH)
13	1	24109-01	BAND CLAMP, 4 IN (DMC-GC05397)
14	2	24112-01	BEARING FLANGE (J-DAY T-62G)
15	2	24113-01	BEARING & LOCK COLLAR
16	1	24118-01	PULLEY, 3 IN (BURNS 2AK30)
17	1	24119-01	PULLEY, 18" (BURNS 2AK184H)
18	2	24123-01	V-BELT (AX-74)
19	3	24133-01	NUT (3/8)
20	15	24144-01	BOLT, CARRIAGE (3/8 X 1)
21	25	24145-01	NUT, FLANGED (3/8)
22	8	24146-01	BOLT, SELF TAPPER (1/4 X 0.5)
23	31	24150-01	NUT, FLANGED (1/4)
24	4	24154-01	BOLT, CARRIAGE (3/8 X 1.25)
25	1	24171-01	BUSHING, 1.25"
26	1	24177-01	KEY (1 1/4 SHAFT)
27	4	24178-01	SCREW, SELF TAPPER #10 x 1
28	6	24202-01	BOLT, HEX (3/8 X 1.25)
29	1	24208-01	TAP BOLT (3/8 X 5)
30	25	24210-01	BOLT, HEX (1/4 X .50)
31	6	24211-01	BOLT, FLANGED (1/4 X .75)
32	1	26111-01	MOTOR MTG AS.